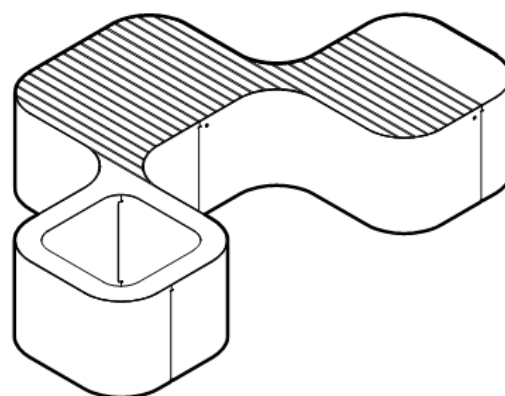
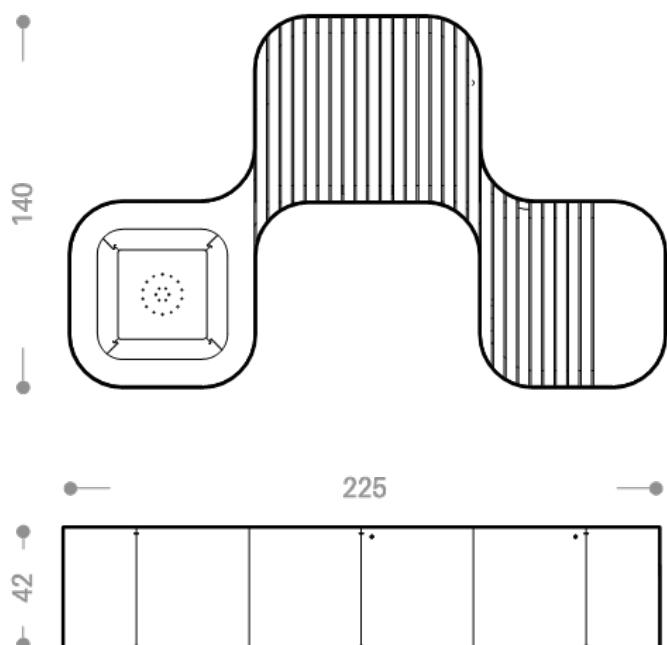
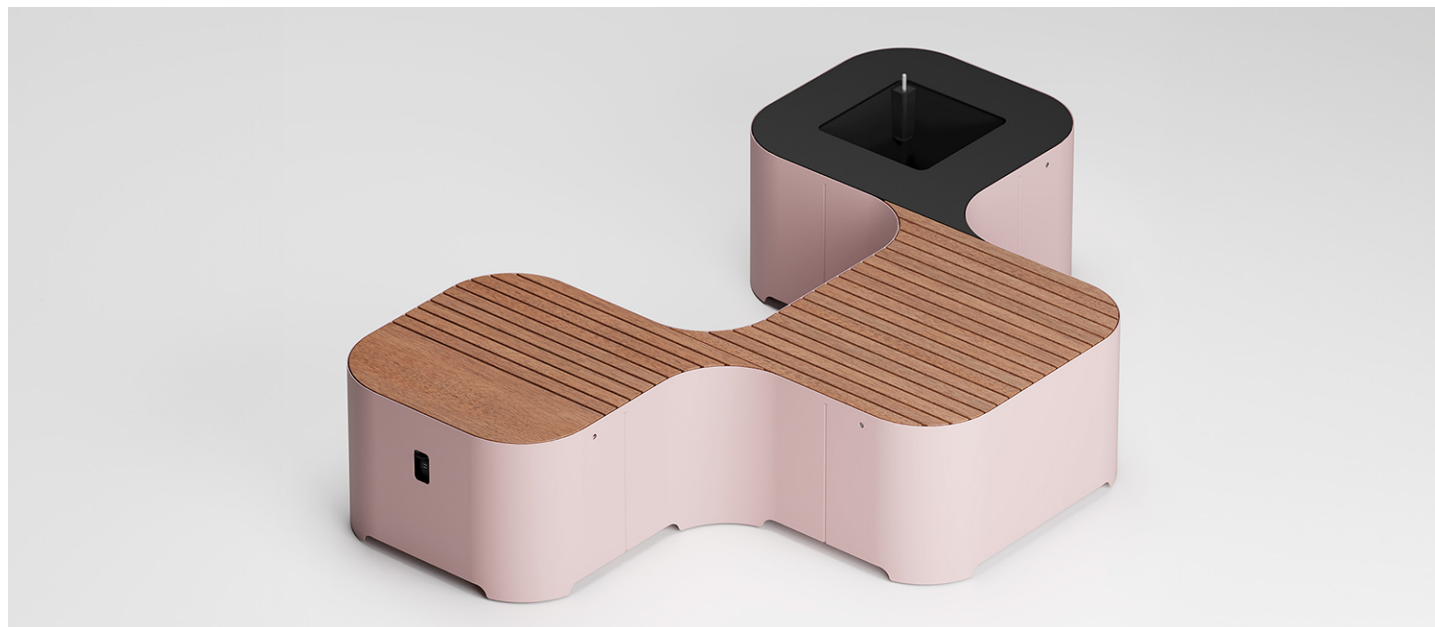


Datasheet

3-module Pinch bench with two seats and planter

Product code 608-3M-F

Rev. 0 of 27/08/2024



2/5

Dimcar si riserva di apportare, in qualsiasi momento, modifiche sui prodotti ritenute utili al miglioramento qualitativo degli stessi; le immagini contenute nelle schede potrebbero non riprodurre fedelmente i colori reali degli articoli.

Datasheet

3-module Pinch bench with two seats and planter

Product code 608-3M-F

Rev. 0 of 27/08/2024



DESCRIPTION

Structure

The Pinch bench stands out for its soft and sinuous lines, with a clean and welcoming design with generous seats. It adapts to any type of urban context, both in public outdoor spaces and in indoor environments, adaptable to architectural projects, whether contemporary or historical.

Composed of a shaped perimeter body, obtained by laser cutting and made of 2 mm thick galvanized sheet metal, and an internal stiffening frame made of galvanized sheet metal profiles and equipped with adjustable feet at the base.

Upper covering made of shaped okumè wood profiles, section mm. 40x20, installed on special frames secured to the perimeter structure.

The module is equipped with a USB socket with a special closing door on the side, all the electrical components are enclosed in a special compartment inside the structure.

Optional: the module can integrate a WIRELESS charging device (upon customer request).

Flowerpot module, equipped with a container made of 2 mm thick sheet metal.

Total weight: 129Kg

3/5

Dimcar si riserva di apportare, in qualsiasi momento, modifiche sui prodotti ritenute utili al miglioramento qualitativo degli stessi; le immagini contenute nelle schede potrebbero non riprodurre fedelmente i colori reali degli articoli.

Datasheet

3-module Pinch bench with two seats and planter

Product code 608-3M-F

Rev. 0 of 27/08/2024



FINISH ACCORDING TO THE CATALOGUE



RAL 3015
(Steel parts)



RAL 9005
(Planter tub)

Customers can request a different finish from the RAL color options available on our website.

Datasheet

3-module Pinch bench with two seats and planter

Product code 608-3M-F

Rev. 0 of 27/08/2024



TREATMENTS AND FINISHES THAT PREVENT CORROSION

Washing

Spray treatment is used to get rid of oils and fats from metal surfaces by using special degreasing liquids. The process involves drying in a dryer for 15 minutes.

Sandblasting

The porosity of metal surfaces is increased by the manual sandblasting process with river sand, which results in an increase in thermosetting powder adhesion.

Anticorrosive application

The first step in the coating process involves using a thermosetting powder anti-corrosion base made of epoxy resins and specific pigments. It provides enough protection against the elements.

Anticorrosive polymerization

The process involves cooking in an industrial curing oven at 180°C. In this step, the powder is transformed into a coating that is uniform, smooth, and lasting.

Polymerization coloured finish

The final phase of coating with thermosetting powders. The application complies with the same principles as the anti-corrosion.

Polymerization colored finish

The final product will be cured in an industrial curing oven at a temperature of 180°C. The procedure is based on the same principles as the polymerization of the anti-corrosion agent. The powder becomes a uniform coating, and the surface becomes the characteristics of the chosen color type, including smooth, peeled, or wrinkled, etc.

2/5

MAINTENANCE PLAN FOR WOODEN PARTS

For a long service life of wood planks, periodic maintenance work is necessary, therefore, maintenance is recommended **every three to six months and in any case once a year**.

For periodic maintenance, carry out light sanding with a 150-grit abrasive sponge, apply a thin coat of Adler Oil, absolutely avoiding the formation of layers.

For the renewal of aged and graying elements, proceed with a thorough sanding with a 150-grit abrasive sponge in the direction of the fibers, removing any existing paint residue.

Proceed with an initial application of Adler Light Mahogany Oil by brush. After 12 hours, apply a second coat of Olio Adler light mahogany with a brush and then pull off excess product with a soft cloth.

Please note, necessary maintenance products such as Oils and impregnants are not included in the product supply but can be requested separately.

Dimcar si riserva di apportare, in qualsiasi momento, modifiche sui prodotti ritenute utili al miglioramento qualitativo degli stessi; le immagini contenute nelle schede potrebbero non riprodurre fedelmente i colori reali degli articoli.

Datasheet

3-module Pinch bench with two seats and planter

Product code 608-3M-F

Rev. 0 of 27/08/2024



DELIVERY

Prodotto fornito in kit di assemblaggio con viteria in acciaio ed istruzioni per il montaggio e fissaggio.

FIXING

Il prodotto è predisposto per il fissaggio al suolo mediante tirafondi e tasselli ad espansione.

CORPORATE CERTIFICATES

ISO 9001:2015

Quality Management System.

UNI EN ISO 3834-3:2021

Welding quality management system.

Processing center

Certificate according to Italian Law D.M. of 17 Jan 2018