

Datasheet

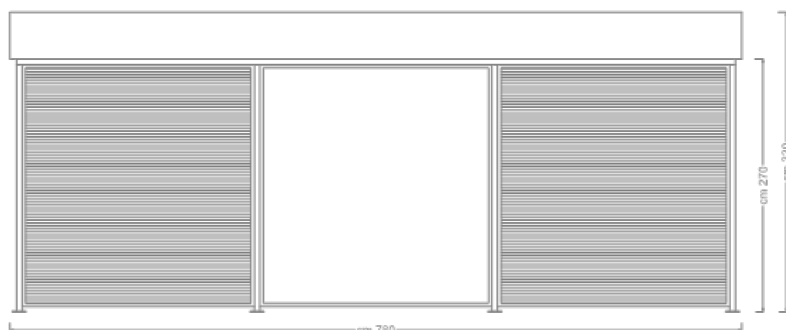
Maranello indoor cycle station

Product code 810

Rev. 0 of 30/05/2019



1/5



Dimcar reserves the right to make, at any time, changes on the products deemed useful to improve the quality of the same; the images contained in the sheets may not faithfully reproduce the real colors of the items.

Datasheet

Maranello indoor cycle station

Product code 810

Rev. 0 of 30/05/2019



DESCRIPTION

Structure

Composed of perimeter support uprights made of 80x80x2 mm square section tube. Each upright is equipped with a base plate made of 6 mm thick galvanized sheet metal.

- Perimeter panels (removable type) made of modules made with a 3 mm thick galvanized steel profile frame.
- Panel infill of the following types:
 - Modules with infill made of Ø 25x1.5 mm galvanized steel round tube profiles, arranged horizontally with a gap between the various profiles of approximately 10 mm.
 - Modules with infill made of insulated material with a smooth external surface for the affixing of any graphic stickers (not included).
 - Single front module (entrance side), with infill made of shatterproof glass, 4+4 mm thick, for the affixing of graphic stickers (not included).
 - Entrance door with an opening of approximately 120 cm. made with galvanized steel profiles and shatterproof glass infill, thickness mm. 4+4. The entrance is controlled by a special electronic lock with opening by RFID badge.
- Covering frame made of support beams made of rectangular section tube mm. 160x80x3.
- Perimeter frame made of galvanized sheet metal paneling for the affixing of graphic stickers (not included).
- Covering made of insulated panels arranged at an angle to drain rainwater.

The Cycle Station is equipped with a lighting system inside, designed for connection to the public network.

2/5

Dimcar reserves the right to make, at any time, changes on the products deemed useful to improve the quality of the same; the images contained in the sheets may not faithfully reproduce the real colors of the items.

Datasheet

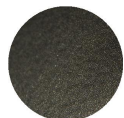
Maranello indoor cycle station

Product code 810

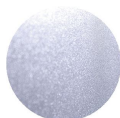
Rev. 0 of 30/05/2019



COLOR FINISH AS PROVIDED IN THE CATALOG



Iron gray
(Uprights and upper frame)



Brilliant aluminum
(Perimeter panels)

Customers can request a different finish from the RAL color options available on our website.

PRODUCT OPTIONALS



Product code 912-R - Bike Service column for maintenance and charging



Product code 912-M - Bike Service column for maintenance

Datasheet

Maranello indoor cycle station

Product code 810

Rev. 0 of 30/05/2019



ANTICORROSIVE TREATMENTS AND FINISHES

Washing

Spray treatment for removing oil and grease from metal surfaces using special degreasing liquids. Subsequent drying in dryer for 15 minutes.

Sandblasting

Manual sandblasting process with river sand, which increases the porosity of metal surfaces and thus the adhesion of thermosetting powders.

Anti-corrosive application

First painting cycle with an anticorrosive thermosetting powder primer based on epoxy resins and special pigments. It provides adequate protection against weathering.

Anticorrosive polymerization

Baking in an industrial curing oven at a temperature of 180°C. During this stage, the powder turns into a uniform, smooth and durable coating.

Colored finish application

Final coating cycle with thermosetting powders. Application follows the same principles as the anticorrosive.

Polymerization colored finish

Final baking in an industrial curing oven at a temperature of 180°C. The procedure follows the same principles as the curing of the anticorrosive. The powder is transformed into a uniform coating, and the surface appearance takes on the characteristics of the chosen color type, e.g. smooth, textured, wrinkled, etc.

4/5

Dimcar reserves the right to make, at any time, changes on the products deemed useful to improve the quality of the same; the images contained in the sheets may not faithfully reproduce the real colors of the items.

Datasheet

Maranello indoor cycle station

Product code 810

Rev. 0 of 30/05/2019



DELIVERY

Product supplied in assembly kit with steel hardware and instructions for mounting and grounding.

FIXING

The structure is equipped at the base with plates with holes for anchoring to the ground.

CORPORATE CERTIFICATIONS

ISO 9001:2015

Quality management system.

UNI EN ISO 3834-3:2021

Welding quality management system.

EN 1090-1:2009

The product bears CE Marking in accordance with EN 1090-1:2009 in execution class EXC1.

Processing center

Certificate of Processing Center

5/5

Dimcar reserves the right to make, at any time, changes on the products deemed useful to improve the quality of the same; the images contained in the sheets may not faithfully reproduce the real colors of the items.