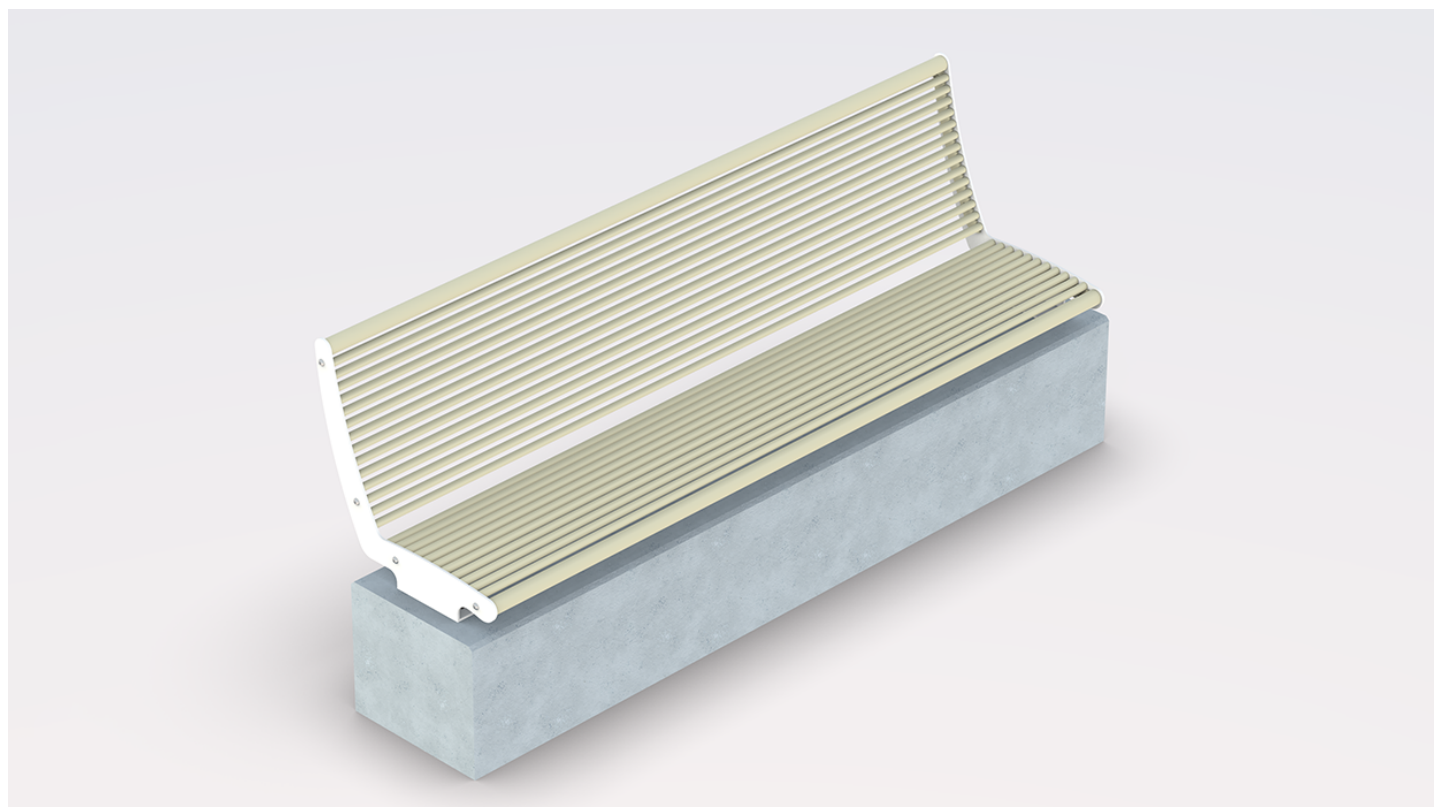


Datasheet

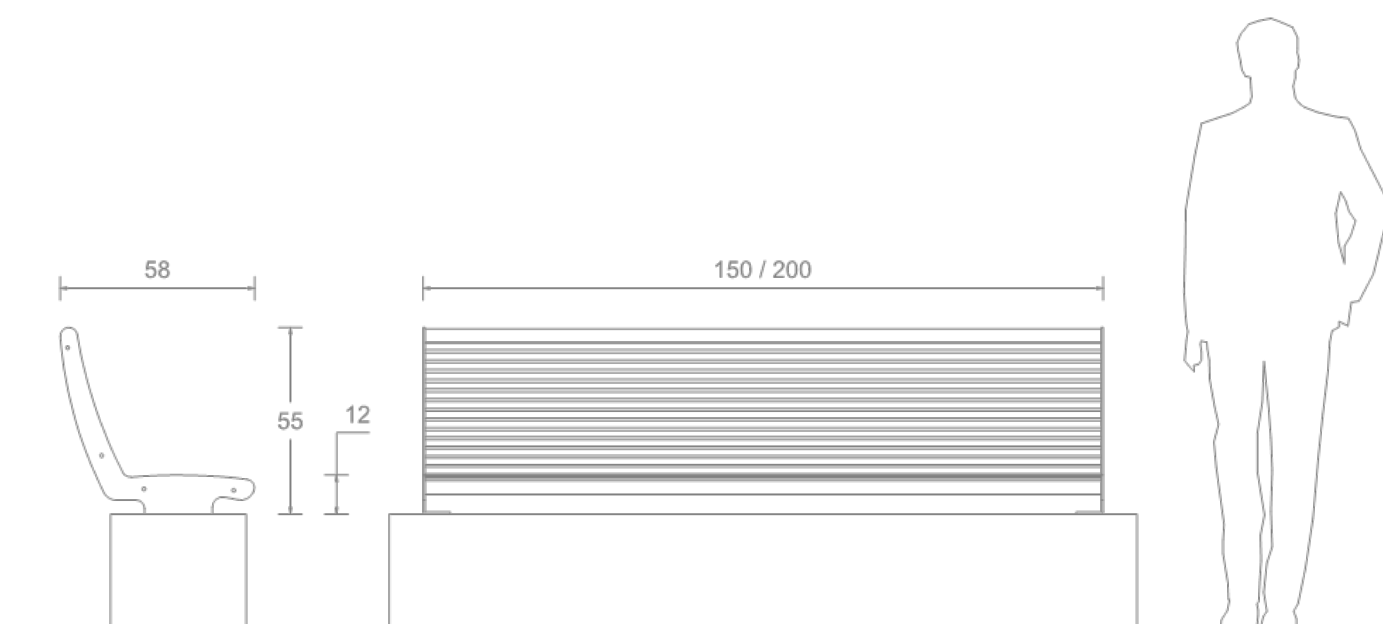
Panama seat wall mounted cm. 150

Product code 602-150

Rev. 0 of 21/04/2023



1/5



Dimcar reserves the right to make, at any time, changes on the products deemed useful to improve the quality of the same; the images contained in the sheets may not faithfully reproduce the real colors of the items.

Datasheet

Panama seat wall mounted cm. 150

Product code 602-150

Rev. 0 of 21/04/2023



DESCRIPTION

Structure

Panama model seat, for installation on existing walls. Composed of two shaped supports, made of 6 mm thick galvanized sheet metal and obtained by cutting with laser technology. The supports are equipped with holes at the base for fixing to a wall.

- Seat (and backrest in the relevant version) made with galvanized steel round tube profiles Ø mm. 20x1.5 and oversized terminal profiles Ø mm. 40x1.5.
- All the profiles are welded onto special templates made of 6 mm thick galvanized sheet metal, obtained by cutting with laser technology, which give them an anatomical shape.

Peso complessivo: 65Kg

Datasheet

Panama seat wall mounted cm. 150

Product code 602-150

Rev. 0 of 21/04/2023



COLOR FINISH AS PROVIDED IN THE CATALOG



RAL 9010
(Supports)



RAL 1015
(Seating)

Customers can request a different finish from the RAL color options available on our website.

PRODUCT VARIANTS



Product code 602-200 - Panama seat wall mounted cm. 200



Product code 602-P-150 - Panama seat wall mounted of cm. 150



Product code 602-P-200 - Panama seat wall mounted of cm. 200



Product code 602-P-S - Panama single seat wall mounted of cm. 50



Product code 602-S - Panama single seat wall mounted of cm. 50

Datasheet

Panama seat wall mounted cm. 150

Product code 602-150

Rev. 0 of 21/04/2023



ANTICORROSIVE TREATMENTS AND FINISHES

Washing

Spray treatment for removing oil and grease from metal surfaces using special degreasing liquids. Subsequent drying in dryer for 15 minutes.

Sandblasting

Manual sandblasting process with river sand, which increases the porosity of metal surfaces and thus the adhesion of thermosetting powders.

Anti-corrosive application

First painting cycle with an anticorrosive thermosetting powder primer based on epoxy resins and special pigments. It provides adequate protection against weathering.

Anticorrosive polymerization

Baking in an industrial curing oven at a temperature of 180°C. During this stage, the powder turns into a uniform, smooth and durable coating.

Colored finish application

Final coating cycle with thermosetting powders. Application follows the same principles as the anticorrosive.

Polymerization colored finish

Final baking in an industrial curing oven at a temperature of 180°C. The procedure follows the same principles as the curing of the anticorrosive. The powder is transformed into a uniform coating, and the surface appearance takes on the characteristics of the chosen color type, e.g. smooth, textured, wrinkled, etc.

Datasheet

Panama seat wall mounted cm. 150

Product code 602-150

Rev. 0 of 21/04/2023



DELIVERY

Product supplied in assembly kit with steel hardware and instructions for mounting and grounding.

FIXING

The product is prepared for fixing to the ground using anchor bolts and expansion plugs.

CORPORATE CERTIFICATIONS

ISO 9001:2015

Quality management system.

UNI EN ISO 3834-3:2021

Welding quality management system.

Processing center

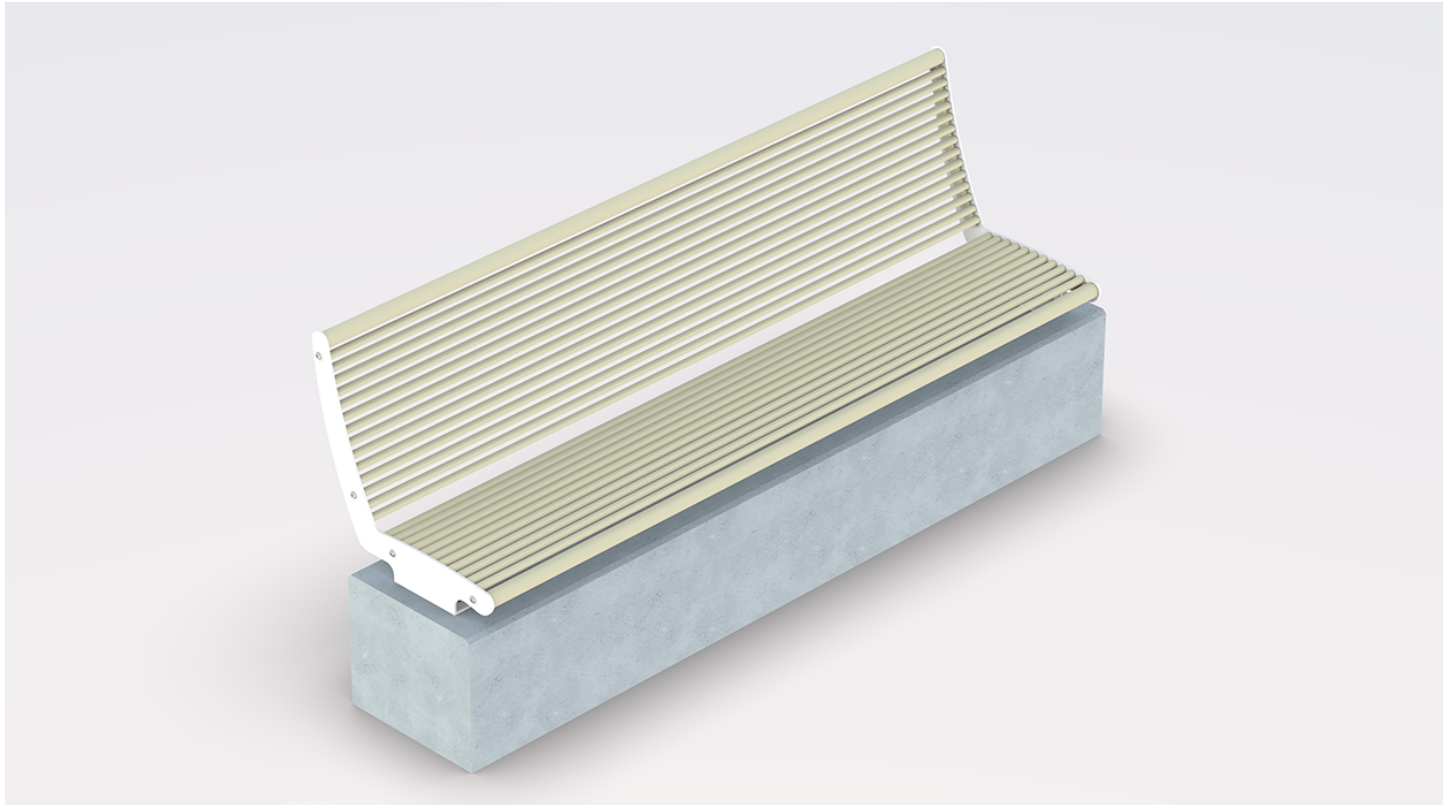
Certificate of Processing Center

Datasheet

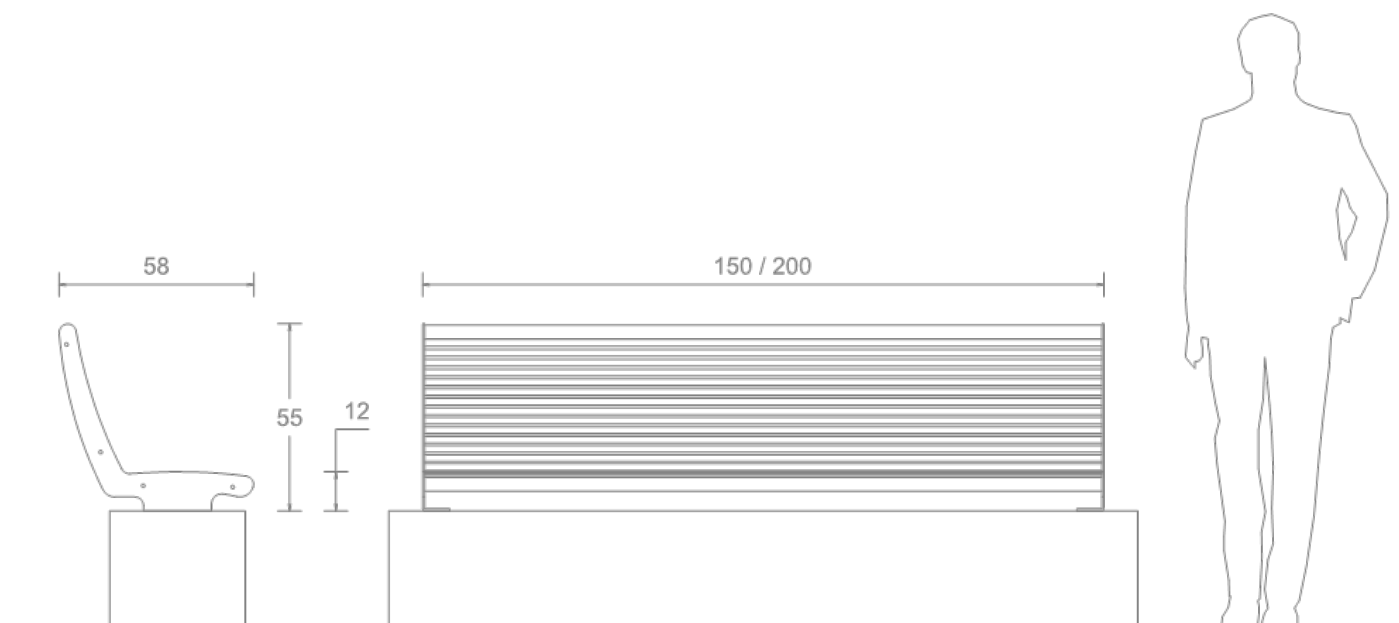
Panama seat wall mounted cm. 200

Product code 602-200

Rev. 0 of 21/04/2023



1/5



Dimcar reserves the right to make, at any time, changes on the products deemed useful to improve the quality of the same; the images contained in the sheets may not faithfully reproduce the real colors of the items.

Datasheet

Panama seat wall mounted cm. 200

Product code 602-200

Rev. 0 of 21/04/2023



DESCRIPTION

Structure

Panama model seat, for installation on existing walls. Composed of two shaped supports, made of 6 mm thick galvanized sheet metal and obtained by cutting with laser technology. The supports are equipped with holes at the base for fixing to a wall.

- Seat (and backrest in the relevant version) made with galvanized steel round tube profiles Ø mm. 20x1.5 and oversized terminal profiles Ø mm. 40x1.5.
- All the profiles are welded onto special templates made of 6 mm thick galvanized sheet metal, obtained by cutting with laser technology, which give them an anatomical shape.

Peso complessivo: 56Kg

Datasheet

Panama seat wall mounted cm. 200

Product code 602-200

Rev. 0 of 21/04/2023



COLOR FINISH AS PROVIDED IN THE CATALOG



RAL 9010
(Supports)



RAL 1015
(Seating)

Customers can request a different finish from the RAL color options available on our website.

PRODUCT VARIANTS



[Product code 602-150 - Panama seat wall mounted cm. 150](#)



[Product code 602-P-150 - Panama seat wall mounted of cm. 150](#)



[Product code 602-P-200 - Panama seat wall mounted of cm. 200](#)



[Product code 602-P-S - Panama single seat wall mounted of cm. 50](#)



[Product code 602-S - Panama single seat wall mounted of cm. 50](#)

Datasheet

Panama seat wall mounted cm. 200

Product code 602-200

Rev. 0 of 21/04/2023



ANTICORROSIVE TREATMENTS AND FINISHES

Washing

Spray treatment for removing oil and grease from metal surfaces using special degreasing liquids. Subsequent drying in dryer for 15 minutes.

Sandblasting

Manual sandblasting process with river sand, which increases the porosity of metal surfaces and thus the adhesion of thermosetting powders.

Anti-corrosive application

First painting cycle with an anticorrosive thermosetting powder primer based on epoxy resins and special pigments. It provides adequate protection against weathering.

Anticorrosive polymerization

Baking in an industrial curing oven at a temperature of 180°C. During this stage, the powder turns into a uniform, smooth and durable coating.

Colored finish application

Final coating cycle with thermosetting powders. Application follows the same principles as the anticorrosive.

Polymerization colored finish

Final baking in an industrial curing oven at a temperature of 180°C. The procedure follows the same principles as the curing of the anticorrosive. The powder is transformed into a uniform coating, and the surface appearance takes on the characteristics of the chosen color type, e.g. smooth, textured, wrinkled, etc.

Datasheet

Panama seat wall mounted cm. 200

Product code 602-200

Rev. 0 of 21/04/2023



DELIVERY

Product supplied in assembly kit with steel hardware and instructions for mounting and grounding.

FIXING

The product is prepared for fixing to the ground using anchor bolts and expansion plugs.

CORPORATE CERTIFICATIONS

ISO 9001:2015

Quality management system.

UNI EN ISO 3834-3:2021

Welding quality management system.

Processing center

Certificate of Processing Center