

# Datasheet

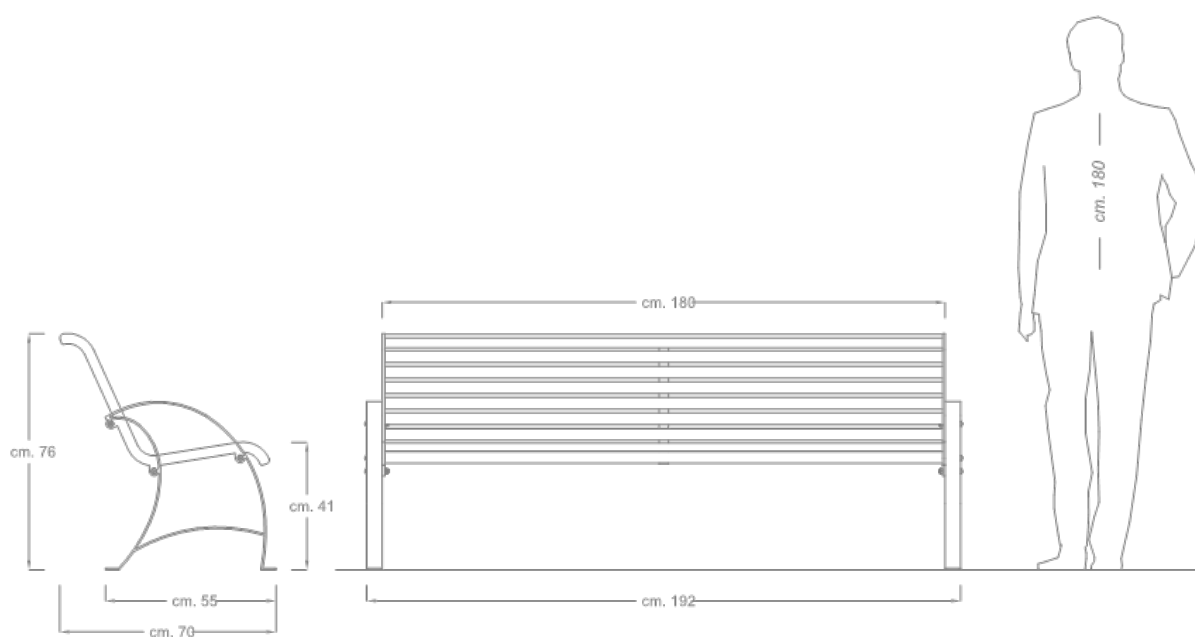
Artemide bench of cm. 180

Product code 1052

Rev. 0 of 10/06/2016



1/5



Dimcar reserves the right to make, at any time, changes on the products deemed useful to improve the quality of the same; the images contained in the sheets may not faithfully reproduce the real colors of the items.

# Datasheet

Artemide bench of cm. 180

Product code 1052

Rev. 0 of 10/06/2016



---

## DESCRIPTION

### Structure

Artemide bench composed of N. 2 supports in galvanized flat iron mm. 50x8 that form two asymmetrical arches connected to each other by a lower arch. The supports are equipped with holes at the base for anchoring to the ground.

- Seat-backrest shell made with 17 profiles in galvanized steel tube with oval section mm. 40x20x1.5.
- The profiles are welded on special galvanized steel templates that give it the anatomical shape.

**Total weight:** 53Kg

# Datasheet

Artemide bench of cm. 180

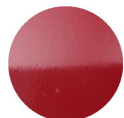
Product code 1052

Rev. 0 of 10/06/2016

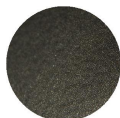


---

## COLOR FINISH AS PROVIDED IN THE CATALOG



RAL 3005  
( Seat and back shell )



Iron gray  
( Supports )

Customers can request a different finish from the RAL color options available on our website.

---

## PRODUCT VARIANTS



[Product code 1052-I - Artemide bench inclusion](#)

# Datasheet

Artemide bench of cm. 180

Product code 1052

Rev. 0 of 10/06/2016



---

## ANTICORROSIVE TREATMENTS AND FINISHES

### Washing

Spray treatment for removing oil and grease from metal surfaces using special degreasing liquids. Subsequent drying in dryer for 15 minutes.

### Sandblasting

Manual sandblasting process with river sand, which increases the porosity of metal surfaces and thus the adhesion of thermosetting powders.

### Anti-corrosive application

First painting cycle with an anticorrosive thermosetting powder primer based on epoxy resins and special pigments. It provides adequate protection against weathering.

### Anticorrosive polymerization

Baking in an industrial curing oven at a temperature of 180°C. During this stage, the powder turns into a uniform, smooth and durable coating.

### Colored finish application

Final coating cycle with thermosetting powders. Application follows the same principles as the anticorrosive.

### Polymerization colored finish

Final baking in an industrial curing oven at a temperature of 180°C. The procedure follows the same principles as the curing of the anticorrosive. The powder is transformed into a uniform coating, and the surface appearance takes on the characteristics of the chosen color type, e.g. smooth, textured, wrinkled, etc.

# Datasheet

Artemide bench of cm. 180

Product code 1052

Rev. 0 of 10/06/2016



---

## DELIVERY

Product supplied in assembly kit with steel hardware and instructions for mounting and grounding.

---

## FIXING

The product is prepared for fixing to the ground using anchor bolts and expansion plugs.

---

## CORPORATE CERTIFICATIONS

### ISO 9001:2015

Quality management system.

### UNI EN ISO 3834-3:2021

Welding quality management system.

### Processing center

Certificate of Processing Center